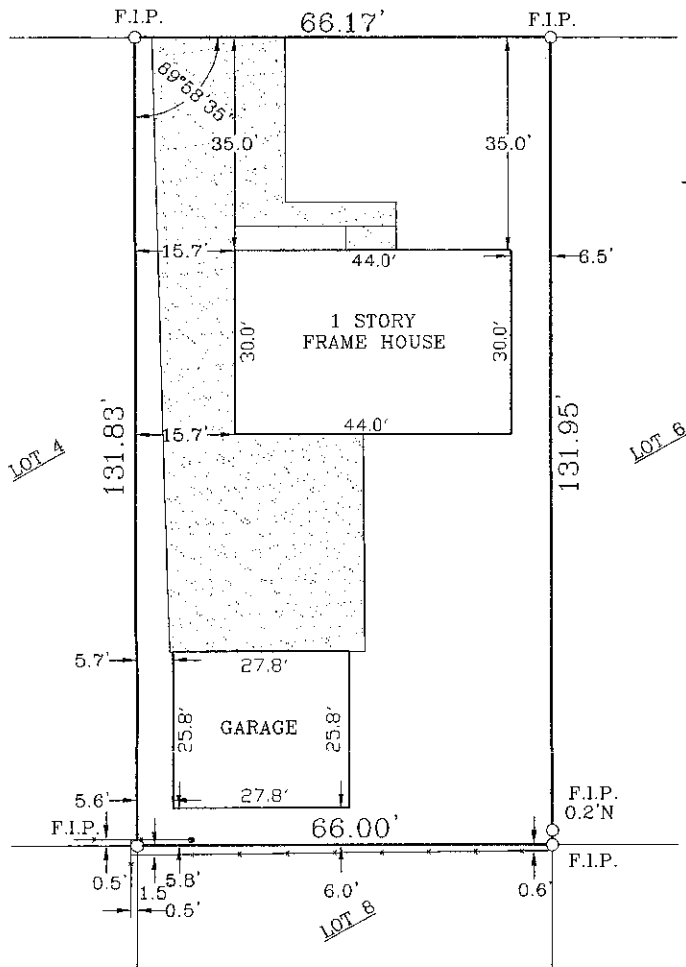


PLAT OF SURVEY

PARK ^{66'} R.O.W. STREET



SCALE 1"=20'
 F.I.P.=FOUND IRON PIPE
 ————=FENCE

PLAT OF SURVEY OF LOT 5 IN BLOCK 4 OF PARK ADDITION TO OSWEGO, VILLAGE OF OSWEGO, KENDALL COUNTY, ILLINOIS.

COMMONLY KNOWN AS 125 PARK STREET.

STATE OF ILLINOIS)
) SS
 COUNTY OF KANE)

WE, E.D.M. & ASSOCIATES, INC., ILLINOIS PROFESSIONAL LAND SURVEYING CORPORATION NO. 104, DO HEREBY CERTIFY THAT THE PLAT SHOWN HEREON IS A CORRECT REPRESENTATION OF A SURVEY PERFORMED AT AND UNDER OUR DIRECTION AND SUPERVISION DATED AT AURORA, ILLINOIS ON JANUARY 27, 2002.

Michael C. Bratton
 MICHAEL C. BRATTON
 ILLINOIS PROFESSIONAL LAND SURVEYOR
 AURORA, ILLINOIS

Todd Surveying
 E.D.M. & Associates, Inc.
 Aurora, Illinois
 Aurora Tel. (630) 892-1309
 Sandwich Tel. (815) 786-8210
 Fax: (630) 892-5544
 ILLINOIS PROFESSIONAL
 LAND SURVEYORS

Rev. Date	Rev. Description
Book Number: NB	Dwg. Size: S
Drawn By: tlc	Checked By:
Reference: 991021	942280-552-S 950465-586-S
Project Number:	2001-1884